

59.25
58.42

83

5.83
4.50
1.33

83

2.16

55.2
58.61

1.250
99.86

1.31

100.17

1.31

59.25
59.12
13

B

G

7.56
4.55
3.01
54
5.55



5.62

5.83

1.19

1.3

1.06

1.28

1.28

1.28

1.28

1.28

1.28

1.28

1.28

1.28

1.28

3.01
61
3.65

5.62

5.20

1.28
1.28
1.28

1.28

1.28

1.28

1.28

1.28

1.28

1.28

1.28

3+00

4

5.19

3.82

1.37

1.37

6.59

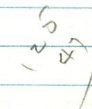
5.19

1.40

3.1

1.71

4.55
3.24
1.31
54
7.7



3.1

2.06

1.80

1.40

6.59

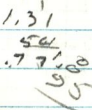
5.19

1.40

3.1

1.71

4.55
3.24
1.31
54
7.7



1.31

1.31

4.6

85

2.50

1.1

1.40

6.59

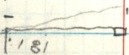
5.19

1.40

3.1

1.71

4.55
3.24
1.31
54
7.7



1.7

1.81

95

2.70

1.8

1.8

1.8

6.59

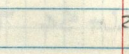
5.19

1.40

3.1

1.71

4.55
3.24
1.31
54
7.7



1.7

1.81

95

2.70

1.8

1.8

1.8

6.59

5.19

1.40

3.1

1.71

4.55
3.24
1.31
54
7.7



1.7

1.81

95

2.70

1.8

1.8

1.8

6.59

5.19

1.40

3.1

1.71